



Water treatment for general industries

CPX Refrigerant Dryers  
21 - 5040 m<sup>3</sup>/h

Range



Piston compressors



Screw compressors



Quality Air Solutions



## Top air quality for high-end equipment and processes

- Dry air and improved lubrication for a longer lifetime of equipment and superior production quality
- Preventing corrosion of equipment by removing water vapour during compression process, no frost
- High efficiency device for extended lifetime, lower maintenance cost and improved production process; energy saving with intelligent automatic drain
- Easy maintenance with quick access to all components

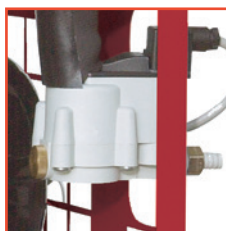
Technology	Refrigerant dryer														
Use	Continuous														
Air quality	Dry														
Noise level	Silent: 50 - 74 dB(A)														
FAD	21 - 5040 m <sup>3</sup> /h														
Power	0,13 - 12,3 kW														
Pressure	13 or 16 bar														
Weight	19 - 650 kg														
Dimensions by CPX model (in mm)	<table border="1"> <tr> <td>10 / 60:</td> <td>350 x 450 x 500</td> </tr> <tr> <td>80 / 100:</td> <td>370 x 764 x 500</td> </tr> <tr> <td>125 / 180:</td> <td>460 x 789 x 560</td> </tr> <tr> <td>225 / 270:</td> <td>580 x 899 x 590</td> </tr> <tr> <td>350 / 700:</td> <td>735 x 962 x 898</td> </tr> <tr> <td>850 / 1500:</td> <td>1.020 x 1.535 x 1.082</td> </tr> <tr> <td>1700 / 3000:</td> <td>1.020 x 1.535 x 2.099</td> </tr> </table>	10 / 60:	350 x 450 x 500	80 / 100:	370 x 764 x 500	125 / 180:	460 x 789 x 560	225 / 270:	580 x 899 x 590	350 / 700:	735 x 962 x 898	850 / 1500:	1.020 x 1.535 x 1.082	1700 / 3000:	1.020 x 1.535 x 2.099
10 / 60:	350 x 450 x 500														
80 / 100:	370 x 764 x 500														
125 / 180:	460 x 789 x 560														
225 / 270:	580 x 899 x 590														
350 / 700:	735 x 962 x 898														
850 / 1500:	1.020 x 1.535 x 1.082														
1700 / 3000:	1.020 x 1.535 x 2.099														

### User benefits



Quality components

For low pressure drop, pressure dew point stable and efficient cooling.



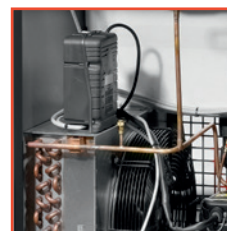
Intelligent discharge

It discharges only water. No noise! Available in the whole range.



Dew point indicator

Easy dew point indicator reading.



Simple layout

Simple layout for easy access and maintenance.



Control panel

Easy access to all the electrical components.



**Innovative design concept**

- 1 Refrigerant compressor
- 2 Condenser
- 3 Heat exchanger with high thermal exchange and low pressure drop
- 4 Automatic condensate discharge
- 5 Dew point indicator

**Options, features and benefits**

Bypass valve + filter support

In case of dryer non-operation, a manual bypass allows a continued compressed air supply while maintaining air filtration. Filters are not included in the option.



Filter support

Allows two filters to be installed on the rear side of the dryer, reducing overall dimensions and installation costs.



Environmentally friendly refrigerant gases

Thanks to the use of R134a, R404A and R410A gas. No impact on the ozone layer. Ecological product, caring for the environment. GAS R410A with very low Global Warming Potential (GWP) and 25% energy saving by use of rotary refrigerant compressors.

